



Solid State Devices, Inc.

14701 Firestone Blvd * La Mirada, Ca 90638

Phone: (562) 404-4474 * Fax: (562) 404-1773

ssdi@ssdi-power.com * www.ssdi-power.com

ST400A20S.22 – ST400B75S.22

Electrical Characteristics (Pins 2 & 3 tied together)^{3/A/}

Part Number	Breakdown Voltage ^{3/} @ I _T			Test Current	Clamping Voltage 10 x 1000 μs		Maximum Reverse Current @ Standoff Voltage		Typical Temperature Coefficient T _C @ I _T	
	V _{BR} nom	V _{BR} min	V _{BR} max		I _T	V _C max	@ I _{PP}	I _R		V _{WM}
	V	V	V		mA	V	A	μA		V
ST400A20	24	21.6	26.4	1	32.4	12.3	1	20	.085	
ST400B20		22.8	25.2							
ST400A26	30	27.0	33.0	1	45.4	8.8	1	26	.085	
ST400B26		28.5	31.5							
ST400A33	38	34.2	41.8	1	53.3	7.5	1	33	.085	
ST400B33		36.1	39.9							
ST400A36	43	38.7	47.3	1	58.1	6.9	1	36	.085	
ST400B36		40.9	45.2							
ST400A40	47	42.3	51.7	1	64.5	6.2	1	40	.085	
ST400B40		44.7	49.4							
ST400A54	63	56.7	69.3	1	87.1	4.6	1	54	.090	
ST400B54		59.9	66.2							
ST400A60	70	63.0	77.0	1	96.8	4.1	1	60	.090	
ST400B60		66.5	73.5							
ST400A70	82	73.8	90.2	1	113.0	3.5	1	70	.090	
ST400B70		77.9	86.1							
ST400A75	88	79.2	96.8	1	121.0	3.3	1	75	.090	
ST400B75		83.6	92.4							

NOTE: All specifications are subject to change without notification.
SCD's for these devices should be reviewed by SSDI prior to release.

DATA SHEET #: T00043C

DOCX



Solid State Devices, Inc.

14701 Firestone Blvd * La Mirada, Ca 90638

Phone: (562) 404-4474 * Fax: (562) 404-1773

ssdi@ssdi-power.com * www.ssdi-power.com

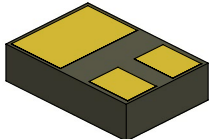
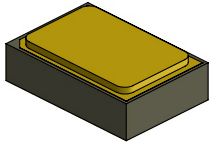
ST400A20S.22 – ST400B75S.22

Package Outline: SMD.22 (S.22)

2 & 3

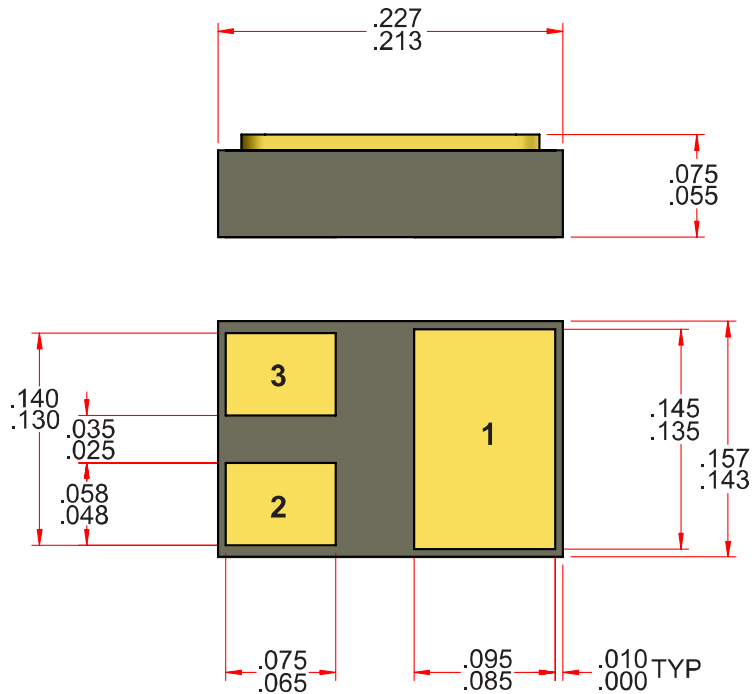
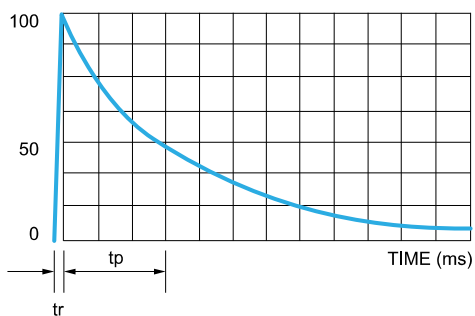


1



*Pins 2 & 3 tied together

Figure 1 - Exponential 10 / 1000 μ S Waveform



NOTE: All specifications are subject to change without notification.
SCD's for these devices should be reviewed by SSDI prior to release.

DATA SHEET #: T00043C

DOCX