



Solid State Devices, Inc.

14701 Firestone Blvd * La Mirada, CA 90638
Phone: (562) 404-4474 * Fax: (562) 404-1773
ssdi@ssdi-power.com * www.ssdi-power.com

SDA174HF series

Designer's Data Sheet

Part Number/Ordering Information ^{1/}

SDA174

HF

Screening ^{2/}

— = Not Screened

TX = TX Level

TXV = TXV Level

S = S Level

Reverse Recovery

HF = Hyper Fast

Family/Voltage

J = 600 V

K = 700 V

L = 800 V

M = 900 V

30 nsec
2.0 Amp
Single Phase Bridge
Rectifier Assembly
600 – 900 Volts

FEATURES:

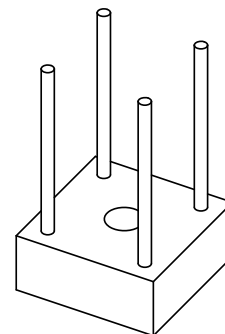
- Reverse Recovery Time: 30 ns Max
- Average Output Current: 2.0 Amps
- PIV: 600 to 900 Volts
- Hermetically Sealed Internal Discretes
- Aluminum Case
- Thermal Conductive Epoxy Encapsulated
- Available in Higher Voltages
- Available in Ultra Fast, Fast, and Standard Recovery

Electrical Characteristics		Peak Inverse Voltage (per leg)	Average DC Output Current T _C =Case Temp		Reverse Recovery Time	Peak Forward Surge Current (1 Cycle)	Maximum Forward Voltage (per leg) @ 1.0 ADC	Maximum Reverse Current (per leg) @ PIV	
			50°C	100°C				25°C	100°C
Part Number		Volts	Amps	Amps	ns	Amps	Volts	µA	µA
SDA174J	HF	600	2.0	1.8	30	25	1.9	10	200
SDA174K	HF	700	2.0	1.8	30	25	1.9	10	200
SDA174L	HF	800	2.0	1.8	30	25	1.9	10	200
SDA174M	HF	900	2.0	1.8	30	25	1.9	10	200

NOTES:

^{1/} For ordering information, price, and availability - contact factory.

^{2/} Screening based on MIL-PRF-19500. Screening flows available on request.



NOTE: All specifications are subject to change without notification.
SCD's for these devices should be reviewed by SSDI prior to release.

DATA SHEET #: RA0105A

DOC

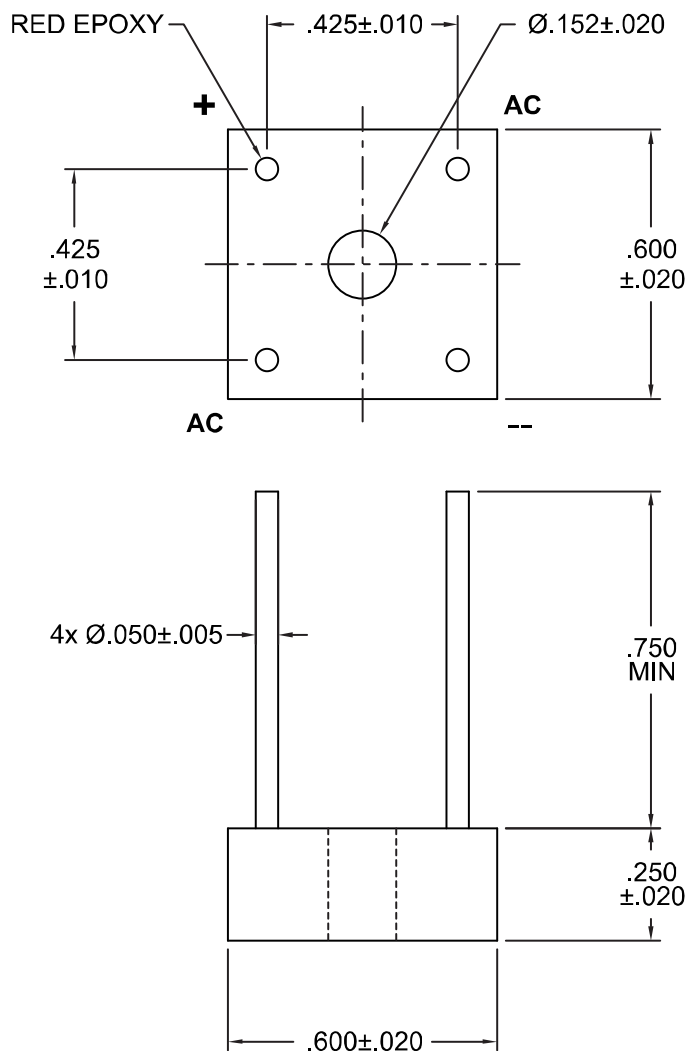


Solid State Devices, Inc.

14701 Firestone Blvd * La Mirada, CA 90638
Phone: (562) 404-4474 * Fax: (562) 404-1773
ssdi@ssdi-power.com * www.ssdi-power.com

SDA174HF series

SDA174J through SDA174M:



*For information on curves, contact the Factory Representative for Engineering Assistance.

Design Notes:

Operating Temperature T_{OP} -55 °C to +150 °C

Reverse Recovery Time $I_F = 500mA$, $I_R = 1.0$ Amp, $I_{rr} = 250mA$

NOTE: All specifications are subject to change without notification.
SCD's for these devices should be reviewed by SSDI prior to release.

DATA SHEET #: RA0105A

DOC