



Solid State Devices, Inc.

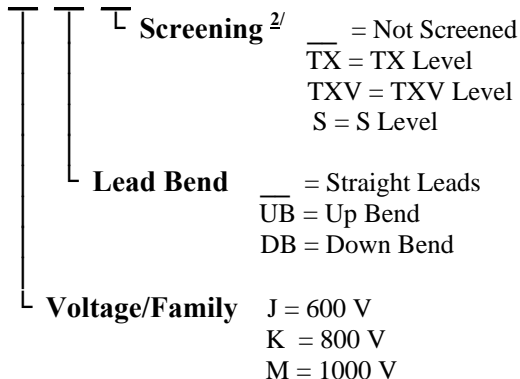
14701 Firestone Blvd * La Mirada, Ca 90638
 Phone: (562) 404-7855 * Fax: (562) 404-1773
 ssdi@ssdi-power.com * www.ssdi-power.com

SPA560 Series

DESIGNER'S DATA SHEET

Part Number / Ordering Information ^{1/}

SPA560



22A / 600-1000V THREE PHASE BRIDGE RECTIFIER ASSEMBLY ULTRA FAST – 70 ns

Features:

- Higher Blocking Voltage Available. Contact Factory.
- Average Output Current 22 Amps
- Low Reverse Leakage Current
- Constructed with Void-free, Hermetically Sealed Discretes
- Aluminum Case for Maximum Thermal Conductivity
- Small Package Size (0.89 x 0.89 x 0.39")
- TX and TXV & S Level Screening Available
- Superior Replacement for Sensitron S455DC, S455FC, & S455GC
- Standard, Fast, & Hyper Fast Versions Available. Contact Factory.

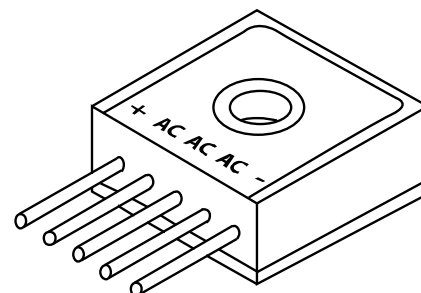
Maximum Ratings ^{3/}

		Symbol	Value	Units
Peak Inverse Voltage	SPA560J	PIV	600	Volts
	SPA560K		800	
	SPA560M		1000	
Average Rectified Output Current (T _C = Case Temperature)	T _C = 55°C	I _{O1}	22	Amps
	T _C = 100°C	I _{O2}	15	
Peak Surge Current (8.3 ms Pulse, Half Sine Wave, Superimposed on Rated Load)		I _{FSM}	125	Amps
Operating & Storage Temperature		T _{op} & T _{stg}	-55 to +150	°C
Maximum Thermal Resistance, Junction to Case		R _{θJC}	1.25	°C/W

Notes:

- ^{1/} For Ordering Information, Price, and Availability Contact Factory.
^{2/} Screening based on MIL-PRF-19500. Screening flows available on request.
^{3/} Unless Otherwise Specified, All Maximum Ratings/Electrical Characteristics @ 25°C.

SPA560



NOTE: All specifications are subject to change without notification.
 SCD's for these devices should be reviewed by SSDI prior to release.

DATA SHEET #: RA0091B

DOC



Solid State Devices, Inc.

14701 Firestone Blvd * La Mirada, Ca 90638

Phone: (562) 404-4474 * Fax: (562) 404-1773

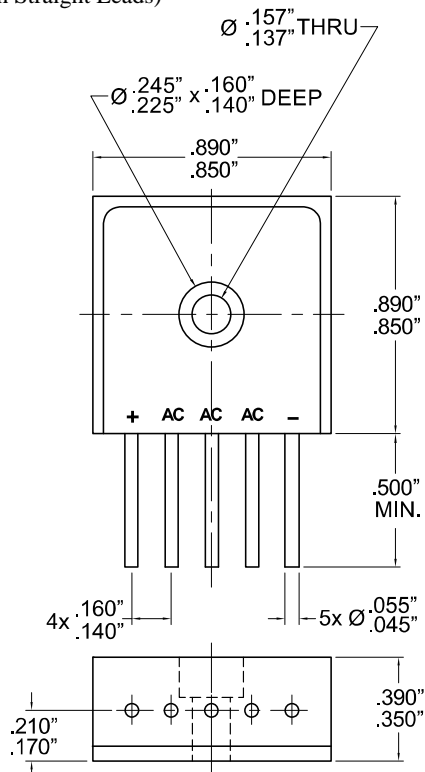
ssdi@ssdi-power.com * www.ssdi-power.com

SPA560 Series

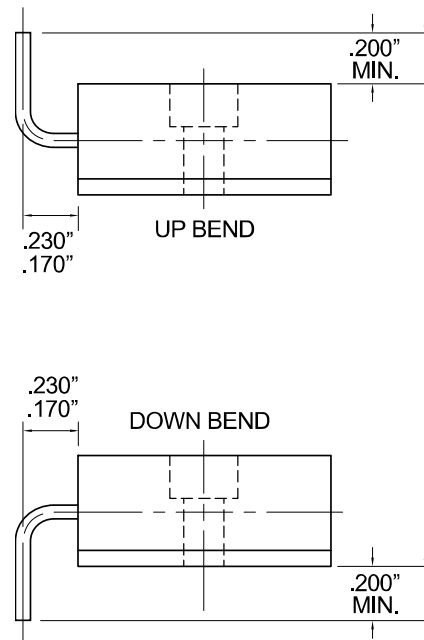
Electrical Characteristic ^{3/}		Symbol	Min	Typ	Max	Units
Maximum Forward Voltage Per Leg (T _A = 25°C, pulsed)	I _F = 3A I _F = 9A	V _{F1} V _{F2}	—	—	1.40 1.75	Volts
Reverse Leakage Current (Rated PIV, T _A = 25°C)		I _{R1}	—	—	10	μA
Reverse Leakage Current (Rated PIV, T _A = 100°C)		I _{R2}	—	—	250	μA
Isolation Resistance	1500V	R _{ISO}	10	—	—	MΩ
Reverse Recovery Time (I _F = 500 mA, I _R = 1 A, I _{RR} = 250 mA T _A = 25°C (Measured on discrete rectifiers prior to assembly)		t _{rr}	—	—	70	ns

SPA560 Package Outline:

(Shown with Straight Leads)



Lead Bend Options:



NOTE: All specifications are subject to change without notification. SCD's for these devices should be reviewed by SSDI prior to release.

DATA SHEET #: RA0091B

DOC