



Solid State Devices, Inc.

14701 Firestone Blvd * La Mirada, Ca 90638
 Phone: (562) 404-4474 * Fax: (562) 404-1773
 ssdi@ssdi-power.com * www.ssdi-power.com

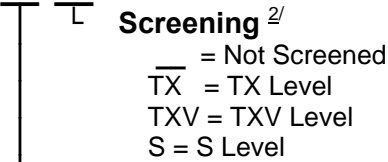
SDA165A thru SDA165G

**10 AMP
 50-1000 VOLTS
 STANDARD RECOVERY
 SINGLE PHASE BRIDGE**

DESIGNER'S DATA SHEET

Part Number / Ordering Information ^{1/}

SDA165



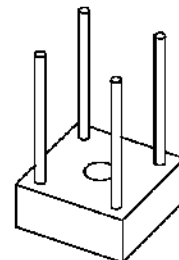
Voltage

- A = 50 V
- B = 100 V
- C = 200 V
- D = 400 V
- E = 600 V
- F = 800 V
- G = 1000 V

- Features:**
- Average Output Current 10 Amps @ 55°C
 - Surge Current of 75 Amps
 - PIV 50-1000 Volts Per Leg
 - Operating & Storage Temp. Range -55°C to +150°C
 - Electrically Insulated from Case
 - Hermetically Sealed Void Free Rectifier Cells
 - Available in Hyper Fast Recovery

Maximum Ratings ^{3/ 4/}		Symbol	Value	Units
Peak Repetitive Reverse and DC Blocking Voltage	SDA165A	V_{RRM} V_{RWM} V_R	50	Volts
	SDA165B		100	
	SDA165C		200	
	SDA165D		400	
	SDA165E		600	
	SDA165F		800	
	SDA165G		1000	
Average Rectified Forward Current Resistive Load, 60 Hz Sine Wave, $T_C = 55^\circ C$		I_O	10	Amps
Peak Surge Current 8.3 ms Pulse, Half Sine Wave		I_{FSM}	75	Amps
Operating & Storage Temperature		$T_{op} \& T_{stg}$	-55 to +150	°C
Maximum Thermal Resistance Junction to Case (per Assembly)		$R_{\theta JC}$	5	°C/W

SDA165 Package:



^{1/} For ordering information, price, operating curves, and availability - Contact factory.
^{2/} Screening based on MIL-PRF-19500. Screening flows available on request.
^{3/} Unless otherwise specified, all electrical characteristics at 25°C.
^{4/} Unless otherwise specified, all electrical characteristics shall be per leg.



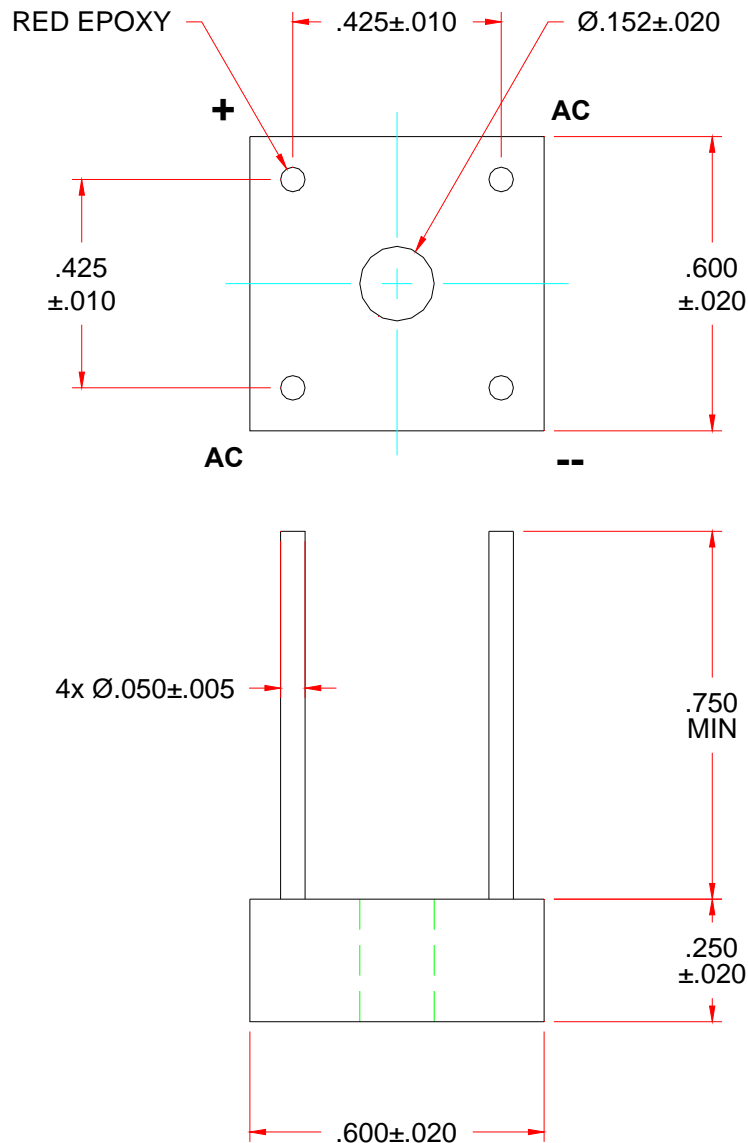
Solid State Devices, Inc.

14701 Firestone Blvd * La Mirada, Ca 90638
Phone: (562) 404-4474 * Fax: (562) 404-1773
ssdi@ssdi-power.com * www.ssdi-power.com

SDA165A thru SDA165G

Electrical Characteristics ^{3/ 4/}	Symbol	Min	Max	Units
Instantaneous Forward Voltage Drop $I_F = 3 \text{ A}$, 300 μsec pulse	V_F	–	1.10	V
Reverse Leakage Current $V_R = \text{Rated}$, 300 μsec pulse minimum	I_{R1}	–	5.0	μA
Reverse Leakage Current 300 μsec pulse minimum	I_{R2}	–	100	μA
Reverse Recovery Time $I_F = 0.5 \text{ A}$, $I_R = 1 \text{ A}$, $I_{RR} = 0.25 \text{ A}$	t_{RR}	–	5	μs

Package Outline:



NOTE: All specifications are subject to change without notification.
SCD's for these devices should be reviewed by SSDI prior to release.

DATA SHEET #: RA0009B

DOC